

# CITY OF MISSION & METRO AREA COMMUNITY PROFILE 2023












Mission is a booming city of nearly 90,000 people in South Texas, one of the fastest growing regions in the nation. Its proximity to Mexico and its international bridge, which boasts more than 1.2 million northbound visitors per year, have ushered tremendous growth in residential and commercial development.

The city is nestled in the heart of the Rio Grande Valley, which has a total population of 1.5 million, and is a hub for various industries, including retail, logistics, international trade, manufacturing, transportation, medicine and education.

Mission is well situated and just a short drive from 12 international bridges, three international airports, SpaceX, South Padre Island and the Port of Brownsville. It's also just two hours from Monterrey, which is considered Mexico's industrial giant, and is connected to some of Texas' largest metro areas through Interstate 69 and Interstate 2.



# CITY OF MISSION & METRO AREA COMMUNITY PROFILE 2023

	CITY	METRO AREA*
 POPULATION:	86,223	900,000
 MEDIAN AGE:	33.1	30.1
 MEDIAN HOUSEHOLD INCOME:	\$57,749	\$44,818
 NUMBER OF HOUSEHOLDS:	28,128	268,598
 PEOPLE PER HOUSEHOLD:	3.1	3.6 PPH
 MEDIAN HOME PRICE:	\$267,000	\$220,000
 MONTHLY APARTMENT RENTAL RATE:		\$853.00
 TOTAL WORKFORCE:	36,332	371,985
 2022 UNEMPLOYMENT RATE:	5.9%	6.5%

\*THE McALLEN-MISSION-EDINBURG METRO AREA IS IN THE RIO GRANDE VALLEY, WHICH A HAS A TOTAL POPULATION OF 1.4 MILLION



THE CENTER FOR EDUCATION AND ECONOMIC DEVELOPMENT IS A BUSINESS CENTER AND THE HEADQUARTERS OF THE MISSION EDC. IT HOUSES 20+ SMALL BUSINESSES AND HOLDS 100s OF COMMUNITY MEETINGS A YEAR.

# CITY OF MISSION & METRO AREA COMMUNITY PROFILE 2023

## CITY K-12 SCHOOL DISTRICTS:

MISSION CISD, SHARYLAND ISD, IDEA SCHOOLS  
PRIVATE SCHOOLS INCLUDE JUAN DIEGO ACADEMY  
CATHOLIC HIGH SCHOOL.



### NUMBER OF HIGH SCHOOLS

CITY: 5

METRO AREA: 50



### AA DEGREE OR HIGHER

CITY: 30%

METRO AREA: 21%



### HIGH SCHOOL GRAD

CITY: 69%

METRO AREA: 72%

## HIGHER EDUCATION CAMPUSES IN THE METRO AREA:

- SOUTH TEXAS COLLEGE – 4 CAMPUSES + TECHNOLOGY CAMPUS ..... 29,000 STUDENTS
- UNIVERSITY OF TEXAS-RIO GRANDE VALLEY – 3 CAMPUSES ..... 32,000 STUDENTS
- UNIVERSITY OF TEXAS-RIO GRANDE VALLEY – SCHOOL OF MEDICINE ..... 222 STUDENTS/249 RESIDENTS
- TEXAS A&M UNIVERSITY – McALLEN CAMPUS
- WAYLAND BAPTIST UNIVERSITY – MISSION (CEED BUILDING)

## TEXAS WORKFORCE COMMISSION & WORKFORCE SOLUTIONS OFFICE

- COMPANIES CAN COUNT ON THESE STATE & LOCAL AGENCIES THAT SUPPORT  
WORKFORCE TRAINING, CERTIFICATIONS AND FUNDING



THE UNIVERSITY OF TEXAS RIO GRANDE VALLEY IS A COMPREHENSIVE UNIVERSITY WITH TWO CAMPUSES AND A MEDICAL SCHOOL. IT ALSO BOASTS A TOP ENGINEERING AND COMPUTER SCIENCE PROGRAM.



# CITY OF MISSION & METRO AREA COMMUNITY PROFILE 2023

## COMMUTE TIME:

**CITY**  
20 MINUTES

**METRO AREA**  
20 MINUTES



## MAJOR HIGHWAYS:

I-69C, I-69E, and  
I-2, US 281 and US 83.



## RAILROAD CONNECTION:

RIO VALLEY  
SWITCHING/  
UNION PACIFIC.



## AIR CONNECTIONS:

### McAllen Miller International Airport



- AIRLINES: AMERICAN, UNITED, AND ALLEGiant  
\*FULL FBO SERVICE AVAILABLE.

- DAILY NON-STOP FLIGHTS; DALLAS-FORT WORTH,  
HOUSTON BUSH AND LAS VEGAS.

### Valley International Airport



- AIRLINES: SOUTHWEST, AMERICAN, UNITED,  
SUN COUNTRY, AND FRONTIER.

## MISSION INTERNATIONAL CROSSING: Anzalduas International Bridge

- MORE THAN 2 MILLION PASSENGER VEHICLE  
CROSSINGS ANNUALLY.
- \$88 MILLION EXPANSION UNDERWAY TO HANDLE  
COMMERCIAL TRAFFIC (TRUCKS)

## CITY UTILITIES:

ELECTRIC  
WATER/SEWER  
NATURAL GAS

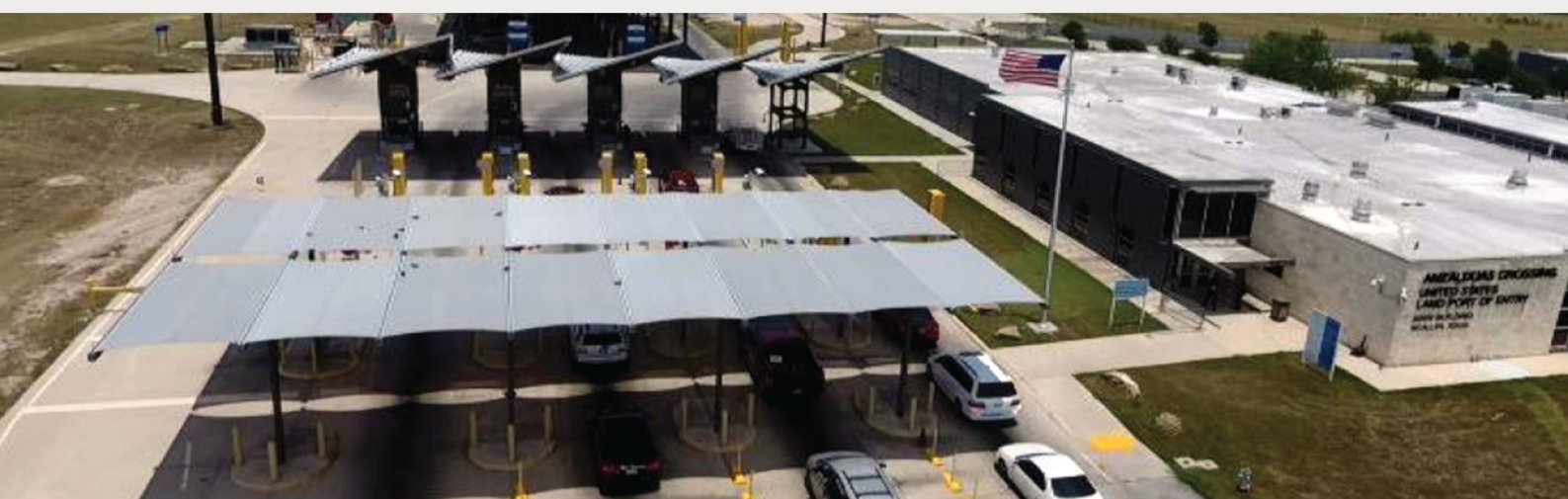
AEP  
CITY OF MISSION  
TEXAS GAS SERVICE



## PROPERTY TAX RATES:

- CITY:
- HIDALGO COUNTY:
- SOUTH TEXAS COLLEGE:
- HIDALGO COUNTY DRAINAGE DISTRICT NO. 1

**\$.5299 PER \$100 VALUATION**  
**\$.5750 PER \$100 VALUATION**  
**\$.1615 PER \$100 VALUATION**  
**\$.1179 PER \$100 VALUATION**



THE ANZALDUAS INTERNATIONAL BRIDGE, LOCATED IN MISSION, HAS BEGUN AN \$88M EXPANSION TO ACCOMMODATE FREIGHT VEHICLES AND WILL BECOME A FULLY COMMERCIAL BRIDGE IN LATE 2024.



# CITY OF MISSION & METRO AREA COMMUNITY PROFILE 2023



## MISSION ECONOMIC DEVELOPMENT CORPORATION KEY CONTACTS:

**TECLO J. GARCIA, MISSION EDC CEO:**

✉ [tgarcia@missionedc.com](mailto:tgarcia@missionedc.com)

☎ 956-929-1114

**JOEL GARZA, COO:**

✉ [jgarza@missionedc.com](mailto:jgarza@missionedc.com)

☎ 956-585-0040

**BLANCA DAVILA, ECONOMIC DEVELOPMENT DIRECTOR:**

✉ [bdavila@missionedc.com](mailto:bdavila@missionedc.com)

☎ 956-585-0040

**RANDY PEREZ, CITY MANAGER:**

✉ [rperez@missiontexas.us](mailto:rperez@missiontexas.us)

☎ 956-580-8724

**JP TERRAZAS, ASST. CITY MANAGER:**

✉ [jpterrazas@missiontexas.us](mailto:jpterrazas@missiontexas.us)

☎ 956-580-3275

**ABEL BOCANEGRA, CITY ENGINEER:**

✉ [abocanegra@missiontexas.us](mailto:abocanegra@missiontexas.us)

☎ 956-580-8780



[missionedc.com](http://missionedc.com)